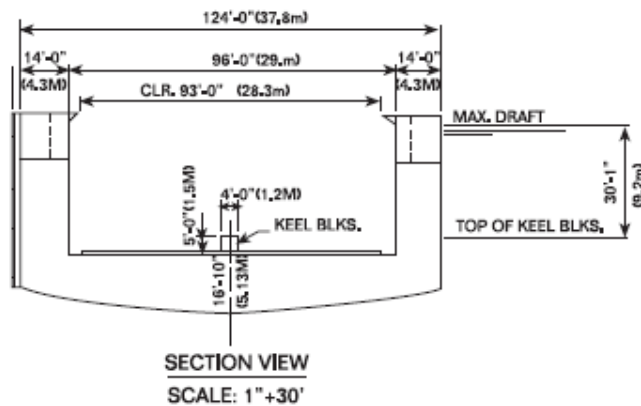
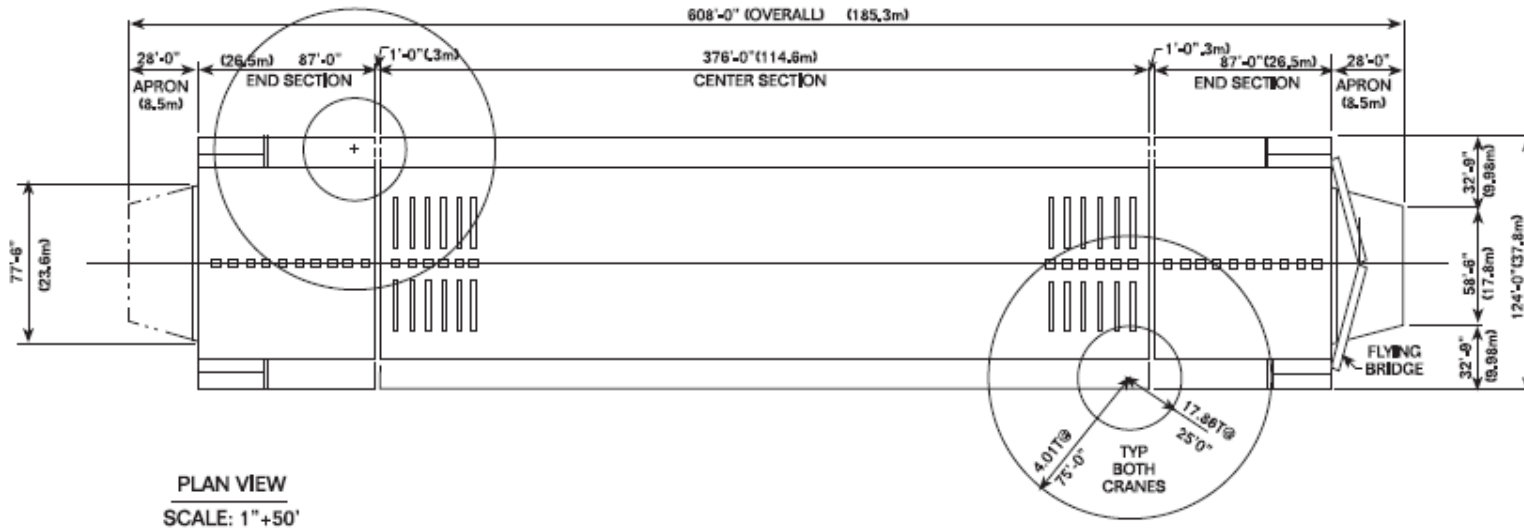




8500 Heckscher Drive • Jacksonville, Florida 32226  
 Tel: (904) 251-1545 • Fax: (904) 251-3500  
 e-mail: jaxsales@atlanticmarine.com  
 web site: www.atlanticmarine.com

Lifting Capacity	14,600 LT	14,832 MT
Length Over Outriggers	608'-0"	185.3 M
Length Of Pontoons	552'-0"	168.3 M
Length Of Keel Line Blocking	540'-0"	164.6 M
Maximum Block Loading	30 LT/sq. ft.	99.9 MT/sq. m.
Width Overall	124'-0"	37.8 M
Clear Width Between Fenders	93'-0"	28.3 M
Maximum Draft Over 4'-0" Keel Block	30'-1"	9.20 M
Crane Capacity @25'-0" (7.6 M)	17.9 LT	18.14 MT



Nautical Miles Between U.S. Ports and Jacksonville, Florida

Port	Nautical Miles	Commercial Vessel @ 14 knots sail hours	Tugs/Barges @ 9.5 knots sail hours
New York, NY	788	56.29	82.95
Philadelphia, PA	765	54.64	80.53
Norfolk, VA	587	41.93	61.79
Charleston, SC	197	14.07	20.74
Savannah, GA	145	10.36	15.26
Brunswick, GA	82	5.86	8.63
Fernandina Beach, FL	53	3.79	5.58
Port Everglades, FL	301	21.50	31.68
Miami, FL	324	23.14	34.11
Straits of Florida	523	37.36	55.05
San Juan, PR	1121	80.07	118.00
Tampa, FL	755	53.93	79.47
Panama Canal	1513	108.07	159.26