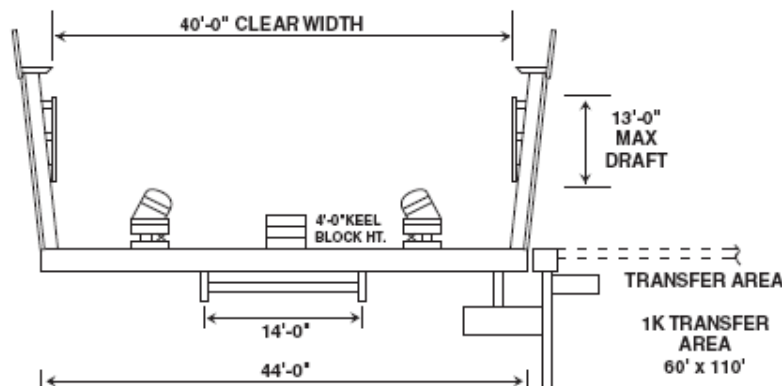
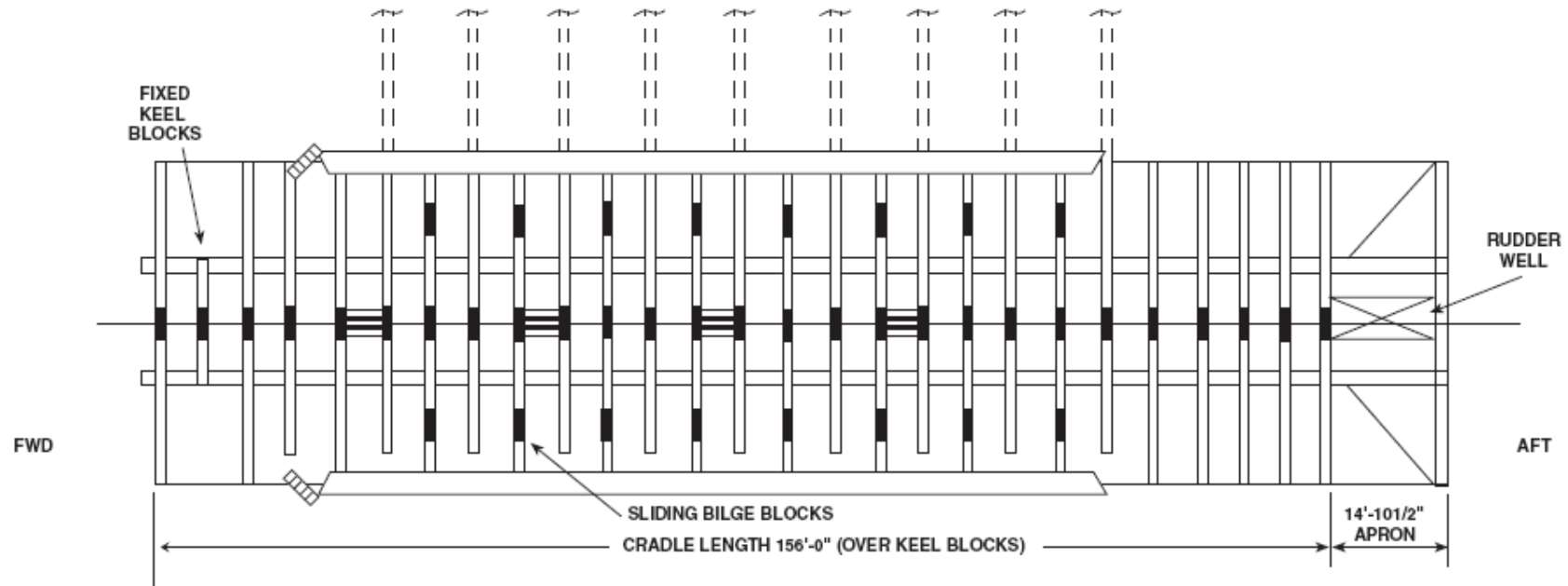




8500 Heckscher Drive • Jacksonville, Florida 32226  
 Tel: (904) 251-1545 • Fax: (904) 251-3500  
 e-mail: jaxsales@atlanticmarine.com  
 web site: www.atlanticmarine.com

Lifting Capacity	1,300 LT	1,321 MT
Cradle Length Overall	170'-10"	51.86 M
Cradle Length Over Keel Blocks	156'-0"	47.56 M
Maximum Block Loading	8 LT/sq. ft.	26.4 MT/sq. m.
Width Overall	44'-0"	13.41 M
Clear Width Between Fenders	40'-8"	12.20 M
Max Fwd Draft Over 4'-0" Keel Block	10'-0"	3.05 M
Max Aft Draft Over 4'-0" Keel Block	13'-0"	3.96 M
Side Transfer Capacity	900 LT	915 MT
Side Transfer Dimensions	110' x 60'	33.5 x 18.29 M



Nautical Miles Between U.S. Ports and Jacksonville, Florida

Port	Nautical Miles	Commercial Vessel @ 14 knots sail hours	Tugs/Barges @ 9.5 knots sail hours
New York, NY	788	56.29	82.95
Philadelphia, PA	765	54.64	80.53
Norfolk, VA	587	41.93	61.79
Charleston, SC	197	14.07	20.74
Savannah, GA	145	10.36	15.26
Brunswick, GA	82	5.86	8.63
Fernandina Beach, FL	53	3.79	5.58
Port Everglades, FL	301	21.50	31.68
Miami, FL	324	23.14	34.11
Straits of Florida	523	37.36	55.05
San Juan, PR	1121	80.07	118.00
Tampa, FL	755	53.93	79.47
Panama Canal	1513	108.07	159.26